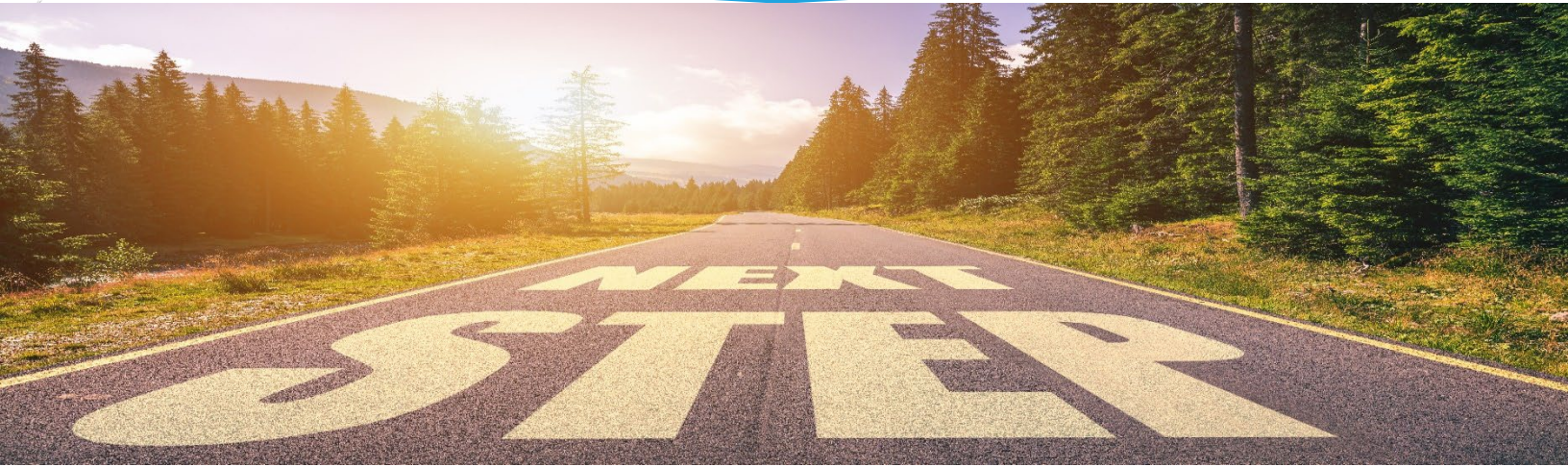




# LASSEN COUNTY RE-ENTRY RESOURCES



**Note: Some services may have changed due to COVID-19,  
Please call to confirm hours and services available**

## COUNTY RESOURCES

---

**Lassen County Probation Department**  
**Location:** 107 South Roop Street  
Susanville, Ca 96130  
**Contact:** (530) 251-8449

## RE-ENTRY SERVICES

---

**California Re-Entry**  
“Drop-in Assistance, Long-term Case Management, Special Needs Assistance, Parole Clothing, Post-Release Assistance, Workshops, Training, Cooperation and Expansion”  
**Website:** <https://www.ca-reentry.org/what-we-do>  
Last Verified On: 12/02/2022

**From Jails to Jobs**  
“Gives ex-offenders the tools they need to find employments.”  
**Website:** <https://jailstojobs.org/>  
Last Verified On: 12/06/2022

**Roadmap to Reentry – A California Legal Guide**  
“A resource of legal information that people in California can turn to about issues along the path of reentry.”  
**PDF:** <https://www.rootandrebound.org/wp-content/uploads/2020/02/RoadmaptoReentry.pdf>  
**Website:** <https://www.rootandrebound.org/resources/ca-roadmap/>  
Last Verified On: 12/06/2022





# LASSEN COUNTY RE-ENTRY RESOURCES

**Note: Some services may have changed due to COVID-19,  
Please call to confirm hours and services available**

## RE-ENTRY SERVICES

---

### **Prisoner Reentry Network's Guide To: IDENTIFICATION: Birth Certificate, Driver's License, Social Security, RAP Sheet**

"This document will outline the steps required for obtaining legal identification in preparation for release, a process that can begin any time following arrest."

**Website:** <https://caitlinkellyhenry.com/wp-content/uploads/2014/06/IDENTIFICATION-PRN-4.17.14.pdf>

Last Verified On: 12/06/2022

### **Directory of U.S Free or Low-Cost Tattoo Removal Programs**

"Removing visible tattoos, especially those that are antisocial or related to gangs, will improve your chances of finding employment, help restore hope and offer healing...For best results, enter your zip code or city to search the surrounding area."

**Website:** <https://jailstojobs.org/tattoo-removal-programs/>

Last Verified On: 12/06/2022

### **Re-Entry Program for California Former Offenders**

"Ex-offenders face barriers as they try to re-enter society after serving their sentence. Former offenders often find it challenging to find employment or housing with their record...Below is a list of assistance programs, organizations, and other resources that are available to ex-offenders in California to assist with reentering society."

**Website:**

<https://www.recordgone.com/articles/re-entry-programs-for-california-former-offenders.htm>

Last Verified On: 12/06/2022

## REPLACING LOST DOCUMENTS

---

### **California Driver's License**

**Contact:** (800) 777-0133

**Website:** <https://www.dmv.ca.gov/portal/driver-licenses-identification-cards/replace-your-driver-license-or-identification-dl-id-card/>

Last Verified On: 12/06/2022

### **Medicare Card**

**Contact:** (800) 633-4227

**TTY:** (877) 486-2048

**Website:** <https://faq.ssa.gov/en-us/Topic/article/KA-01735>

Last Verified On: 12/06/2022

### **Replacement Permanent Resident Card**

**Contact:** (800) 375-5283

**Website:** [www.uscis.gov](http://www.uscis.gov)

Last Verified On: 12/06/2022



# LASSEN COUNTY RE-ENTRY RESOURCES

**Note: Some services may have changed due to COVID-19,  
Please call to confirm hours and services available**

## REPLACING LOST DOCUMENTS, Continued

---

### Replacement Passports

**Contact:** (877) 487-2778

**TTY:** (888) 874-7793

**Website:**

<https://travel.state.gov/content/travel/en/passports/have-passport.html>

Last Verified On: 12/06/2022

### Replacement Social Security Cards

**Contact:** (800) 72-1213

**TTY:** (800) 325-0778

**Website:**

<https://www.ssa.gov/myaccount/replacement-card.html>

Last Verified On: 12/06/2022

### U.S. Tax Returns

**Contact:** (800) 829-1040

**Website:** <https://www.irs.gov/forms-instructions>

Last Verified On: 12/01/2022

### Veterans' Service Records

**Contact:** (866) 272-6272

**Website:** <https://www.archives.gov/veterans>

Last Verified On: 12/06/2022

## CLOTHING RESOURCES

---

### Crossroads Ministries

**Location:** 2410 Main Street

Susanville, CA 96130

**Contact:** (530) 251-0701

**Website:**

<https://www.crossroadssusanville.org/>

Last Verified On: 12/06/2022

### CR Stuff Thrift Store

**Location:** 372 Alexander Avenue

Susanville, CA 96130

**Contact:** (530) 257-3065

Last Verified On: 12/06/2022

### Free Interview Clothes

“Directory of nonprofits across the U.S that are dedicated to giving away professional clothing to those who qualify.”

**Website:** <https://jailstojobs.org/free-interview-clothes/>

Last Verified On: 12/06/2022

### Lassen Family Services

“The community Clothing Closet is available to all individuals in need. Gently used and new clothing is available by appointment only.”

**Location:** 1306 Riverside Drive

Susanville, CA 96130

**Contact:** (530) 257-5004

**Website:** <http://www.lassenfamilyservices.org/>

Last Verified on: 12/06/2022

### NU-2-U Thrift Store

**Location:** 732 Main Street

Susanville, CA 96130

**Contact:** (530) 257-8002

Last Verified on: 12/06/2022



# LASSEN COUNTY RE-ENTRY RESOURCES

**Note: Some services may have changed due to COVID-19,  
Please call to confirm hours and services available**

## CRISIS SERVICES

---

### **Lassen County Crisis Stabilization Unit**

“We provide 24-hour services to help you resolve crisis mental health situations. If you feel that you are in a mental health crisis, please contact us”

**Location:** 555 Hospital Lane  
Susanville, CA 96130

**24-Hour Crisis Services:** (888) 530-8688

**Contact:** (530) 251-8108

**Website:**

<http://www.lassencounty.org/node/142>

Last verified on: 12/06/2022

## FOOD RESOURCES

---

### **CalFresh**

“Benefits include: helping people buy healthy food, help families to afford healthy foods, and most stores accept Electronic Benefit Transfer (EBT) cards, issued by CalFresh.”

**Location:** 1616 Chestnut Street  
Susanville, CA 96130

**Contact:** (530) 251-8152

**Application:** <https://www.getcalfresh.org/en>

**Website:**

<http://www.lassencounty.org/dept/community-social-services/community-social-services>

Last Verified: 12/06/2022

### **Cross Roads**

“Crossroads Ministry provides resources such as Transitional Housing, Homeless Assistance, Food services and so much more to Lassen County.”

**Location:** 2410 Main Street  
Susanville, CA 96130

**Contact:** (530) 251-0701

**Website:**

<https://www.crossroadssusanville.org/programs>

Last verified on: 12/06/2022





# LASSEN COUNTY RE-ENTRY RESOURCES

**Note: Some services may have changed due to COVID-19,  
Please call to confirm hours and services available**

## FOOD RESOURCES, Continued

---

### Fort Sage Family Resource Center

**Location:** 170 D. South Street  
Herlong, CA 96113

**Contact:** (530) 827-3007

**Website:**

<http://fortsagefamilyresourcecenter.yolasite.com>

Last verified on: 12/06/2022

### Westwood Family Resource Center

**Location:** 464725 Road A21  
Westwood, CA 96137

**Contact:** (530) 256-3706

**Website:**

<http://fortsagefamilyresourcecenter.yolasite.com>

Last verified on: 12/06/2022

### Lassen-Modoc Food Bank

**Location:** 611 Main Street  
Susanville, CA 96130

**Contact:** (530) 257-4884

Last Verified: 12/06/2022

## HOUSING RESOURCES

---

### Cross Roads

“Crossroads Ministry provides resources such as Transitional Housing, Homeless Assistance, Food services and so much more to Lassen County.”

**Location:** 2410 Main Street  
Susanville, CA 96130

**Contact:** (530) 251-0701

**Website:**

<https://www.crossroadssusanville.org/programs>

Last verified on: 12/06/2022

## MENTAL HEALTH RESOURCES

---

### Beacon Health Options

“Beacon’s system is built on a strong support structure of doctors, nurses, advocates, and mentors fulfilling members’ behavioral, physical, and social health needs.”

**Contact:** (855) 765-9703

**Website:**

<https://www.beaconhealthoptions.com/>

Last Verified On: 12/06/2022

### CalHOPE Warm Line

“Feeling stressed by Covid-19? Help is just a phone call away! CalHOPE builds community resiliency and helps people recover from disasters through free outreach, crisis counseling, and support services.”

**Contact:** (833) 317-HOPE (4673)

**Website:** <https://calhope.dhcs.ca.gov/>

Last Verified On: 12/06/2022



# LASSEN COUNTY RE-ENTRY RESOURCES

**Note: Some services may have changed due to COVID-19,  
Please call to confirm hours and services available**

## TRANSPORTATION SERVICES

---

### Lassen Rural Bus

“Lassen Rural Bus has 2 commuter routes, 1 Susanville City fixed route, Dial-a-Ride, and special transit services. Dial-a-Ride offers door-to-door individualized service in Susanville for elderly and disabled. Special transit service is available to groups with special needs. Lassen Rural Bus now connects with Plumas County Transit and Modoc County’s Sage Stage”

**Location:** 701-980 Johnstonville Road  
Susanville, CA 96130

**Contact:** (530) 252-7433

Last Verified On: 12/06/2022

## UTILITY ASSISTANCE RESOURCES

---

### AT&T

“High Speed Home Internet for just \$10 a month.”

**Website:** <https://www.att.com/internet/access/>

Last Verified On: 12/06/2022

### EveryoneOn

“We help bring low-cost internet service and affordable computers to those who need it.”

**Website:** <https://www.everyoneon.org/>

Last Verified On: 12/06/2022

### PG&E CARE Program

“Discount program that helps eligible customers pay their energy bills.”

**Contact:** (866) 743-2273

**Website:**

[https://www.pge.com/en\\_US/residential/save-energy-money/help-paying-your-bill/longer-term-assistance/care/care.page](https://www.pge.com/en_US/residential/save-energy-money/help-paying-your-bill/longer-term-assistance/care/care.page)

Last Verified On: 12/06/2022

### PG&E Medical Baseline Program

“Assistance program for residential customers who have special energy needs due to qualifying medical conditions.”

**Contact:** (800) 743-5000

**Website:**

[https://www.pge.com/en\\_US/residential/save-energy-money/help-paying-your-bill/longer-term-assistance/medical-condition-related/medical-baseline-allowance/medical-baseline-allowance.page](https://www.pge.com/en_US/residential/save-energy-money/help-paying-your-bill/longer-term-assistance/medical-condition-related/medical-baseline-allowance/medical-baseline-allowance.page)

Last Verified On: 12/06/2022