

MEDICAL DIRECTORS NEWSLETTER

August 2024

“We didn’t stratify the data by American Indian/Alaska Native, because the numbers were too small.”

– DHCS webinar, reviewing quality data stratified by race



Robert L. Moore
MD, MPH, MBA

Undercounting of American Indian Population

Two years ago, Partnership first stratified Quality Outcome data based on the race/ethnicity we received from DHCS. As noted in prior newsletters, this data showed that outcomes were much worse for the self-identified American Indian/Alaska Native (AI/AN) population than for any other racial group. This prompted Partnership to launch a Tribal Engagement Strategy to build relationships with the 21 Tribal health centers and their associated 51 individual tribes, so that we can work...

[Read More](#)

Breaking News

MCO Tax: Status Update

Many health care leaders in California are talking about the Managed Care Organization (MCO) Tax. We have found that many are not clear on what is going on now, when the new revenue will be coming, and what the impact of the 2024-25 budget deal affected how the MCO tax revenue is directed. Here are some highlights...

[Read More](#)



Non-Invasive Assessment for Liver Fibrosis:

Where Are They Available?

The definitive test for liver fibrosis is a liver biopsy; these are uncomfortable, relatively expensive, and occasionally have serious complications.

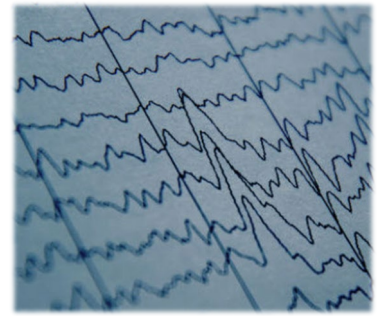
As a result, there are a number of algorithms for evaluating the likely severity of liver disease to predict who can be...

[Read More](#)



The Best Way to Order Electro-Diagnostic Studies

Electro-diagnostic studies such as electro-encephalograms (EEGs), nerve conduction studies, and electro-myelograms (EMGs) are important diagnostic tools for different neurologic and other conditions. It is ideal to...



[Read More](#)

Partnership Educational Opportunities

Diabetes Care Program

Managing diabetes can lead to frustration for patients and cannot be solved with quarterly visits. TeleMed2U has combined a care team approach with remote patient monitoring to provide real-time coaching and education for effective self-management of diabetes.

[Read More](#)



Perinatal Services Webinar

Wednesday, September 11, 2024
Noon to 1 p.m.

[Click here to register](#)

This webinar will walk through the policy and billing aspects of the Partnership Perinatal Services Program. It is essential that all current California Perinatal Services Program managers and billing staff attend. In addition, aspects of Partnership Perinatal Services Program affect all providers of prenatal care, so managers and billing staff of all prenatal care providers are encouraged to attend.

[Read More](#)



Educational Opportunities Outside of Partnership

Sierra Nevada Conservation & Wilderness Medicine Conference

September 6 – 8, 2024

UC Berkeley Forestry Camp

Meadow Valley, CA

[Click here to register](#)

[Read More](#)



YOUR
PARTNER
IN HEALTH



Have questions?

Visit our [blog](#) or [contact us](#)

We thank you for all you are doing to help the vulnerable members of our community!

Robert L. Moore, MD, MPH, MBA

Chief Medical Officer

Email: RMoore@PartnershipHP.org

Your Regional Medical Directors:

Jeff Ribordy, MD, Regional Medical Director

Del Norte, Humboldt, Mendocino and Lake counties

Marshall Kubota, MD, Regional Medical Director

Marin and Sonoma counties

Colleen Townsend, MD, Regional Medical Director

Napa, Solano, and Yolo counties

R. Doug Matthews, MD, Regional Medical Director

Glenn, Butte, Sutter, Colusa, Yuba, Plumas, Sierra, Nevada, and Placer counties

Brad Cox, DO, Regional Medical Director

Siskiyou, Modoc, Shasta, Lassen, Trinity, and Tehama counties

Partnership's mission:

To help our members, and the communities we serve, be healthy

Want to change how you receive these emails? Please email sbrowning@partnershiphp.org